

Fragment Based Drug Discovery: A Revolution in Discovery Chemistry

Management

Harren Jhoti, PhD
Founder and CEO

John Aston, OBE MA ACA
Chief Financial Officer

Martin Buckland, DPhil MBA
Chief Business Officer

David Rees, PhD
Senior VP Medicinal Chemistry

Neil Thompson, PhD
Senior VP Biology

Lyn Leaper, PhD, EPA
Senior VP Intellectual Property

John Lyons, PhD
VP Translational R&D

Chris Murray, PhD
VP Discovery Technology

Jeff Yon, PhD
VP Structural Biology

Murray Yule, MB PhD MRCP
VP Clinical Development

Neil Jones, BSc FCA
VP Finance and Admin.

Board of Directors

Peter Fellner, PhD
Chairman

John Aston, OBE MA ACA
Chief Financial Officer

Martin Buckland, DPhil MBA
Chief Business Officer

Prof Sir Tom Blundell, FRS
University of Cambridge, UK
Co-Founder

Stephen Bunting, PhD
Abingworth

Amos Goren, MBA
Apax Partners

Harren Jhoti, PhD
Founder and CEO

Ned Olivier
Oxford Bioscience Partners

Peter Ringrose, PhD
BBSRC, ex-BMS/Pfizer

Jon Saxe, BSc JD LL.M
ex-President PDL

Patrick Van Beneden, MSci
GIMV

The Company

Astex Therapeutics is the world leader in fragment based drug discovery - the most important advance in drug discovery chemistry in the last 20 years.

- Astex is using its innovative fragment-based drug discovery platform, Pyramid™, to identify and develop new medicines primarily for the treatment of cancer and anti-viral diseases
- The company has established a clinical stage pipeline of novel drug candidates
- All of the products being developed by Astex have been discovered through the use of the company's proprietary technologies
- Based on current output, the company expects Pyramid™ to continue to deliver a steady stream of IND candidates from internal and partnered programmes

Pipeline



Strategic Alliances

- In addition to driving the growth of Astex's in-house pipeline, Pyramid™ underpins the company's drug discovery and development collaborations with major pharmaceutical companies
- The total value of fees, funding and milestone payments under these collaborations potentially exceed \$1 billion, excluding royalties
- Astex has current collaborations with GSK, Janssen Pharmaceutica and Novartis and has successfully completed collaborations with companies including Astellas, AstraZeneca, Bayer-Schering, Boehringer Ingelheim and Mitsubishi Pharma



Scientific Advisors

Prof Sir Tom Blundell, FRS
University of Cambridge, UK
Co-Founder

Prof Chris Abell, PhD
University of Cambridge, UK

Simon Campbell, CBE FRS
ex-Pfizer, ex-President of the
Royal Society of Chemistry

**Barry Furr, OBE MA (Cantab)
PhD**
ex-AstraZeneca

Prof Steve Ley, FRS
University of Cambridge, UK

Dr. Herbie Newell, PhD
Northern Inst. for Cancer Research,
Newcastle upon Tyne, UK

Ian Skidmore, MA (Oxon) PhD
ex-GlaxoWellcome

Prof Robert Stroud, PhD
University of California
San Francisco

Prof Ashok Venkitaraman, MD
University of Cambridge, UK

Clinical Consultants

**Prof Hilary Calvert, MB BChir
MSc MD FRCP FMedSci**
Northern Inst. for Cancer Research,
Newcastle upon Tyne, UK

**Prof Stan Kaye, BSc MD FRCP
FRCR FRSE FMedSci**
Royal Marsden Hospital, UK

**Prof Ian Judson, MA MB BChir
MD FRCP**
Royal Marsden Hospital, UK

**Prof Hagop Kantarjian, MD PhD
MD**
MD Anderson Cancer Center, USA

Dr. Daruka Mahadevan, MD PhD
University of Arizona, USA

**Prof Bruce Ponder, MB PhD FRS
FRCP FMedSci**
University of Cambridge, UK

**Prof Lesley Seymour, MD
FCP(SA) FRCCP**
Queens University, Canada

Dr. Daniel D. Von Hoff, MD FACP
University of Arizona, USA

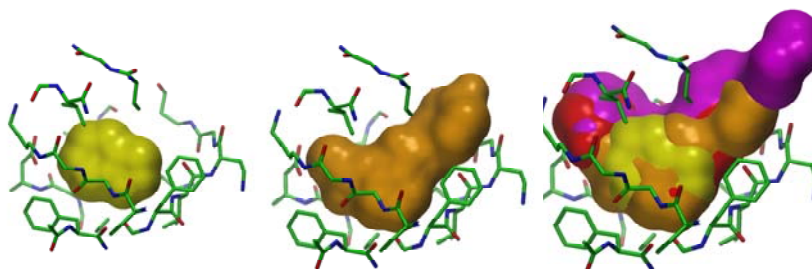
Investors

Abingworth
Oxford Biosciences
Advent International
Alta Partners
Apax
GIMV
HypoVereinsbank
Bayer Schering
GlaxoSmithKline
J&J Development Corporation
Novartis
University of Cambridge
Wellcome Trust

Pyramid™: Fragment Based Drug Discovery

Astex has established its integrated, fragment-based drug discovery approach, **Pyramid™**, as an industry-leading platform that rapidly delivers tailored, high-quality small molecule drug leads with enhanced therapeutic potential.

Pyramid™ defines a process by which a range of high throughput biophysical and computational techniques are used to experimentally characterise the interactions of very low molecular weight compounds (fragments) with their target proteins. These fragments can then be rapidly and efficiently optimised into potent lead compounds using iterative medicinal chemistry guided and informed by structure-based design as illustrated below.



The productivity of **Pyramid™** has allowed the company to generate a robust pipeline including novel “first-in-class” drug compounds and potential “best-in-class” drug candidates which the company is advancing independently and through valuable strategic partnerships with industry leaders such as AstraZeneca, GlaxoSmithKline, Janssen Pharmaceutica (a Johnson & Johnson company) and Novartis.

Company History and Location

Astex was established in 1999 and has raised more than £80 million in equity finance. The company operates from a state-of-the-art, 36,000 sq. ft. facility on the Cambridge Science Park, Cambridge, United Kingdom



Publication Highlights

- Astex scientists have published in world-leading journals including *Nature* and *Science*
- Astex's landmark Pyramid™ technology paper was the 2nd most cited article in *J. Med. Chem.* in 2005
- Astex had 3 papers in the American Chemical Society's list of the top 10 most cited papers in *J. Med. Chem.* in 2007

Contact Details

Astex Therapeutics Limited
436 Cambridge Science Park
Milton Road
Cambridge CB4 0QA
United Kingdom

Tel: +44 (0)1223 226200
Fax: +44 (0)1223 226201
Email: info@astex-therapeutics.com